

Klab architecture

Pandemos Agora

LUSSEMBURGO

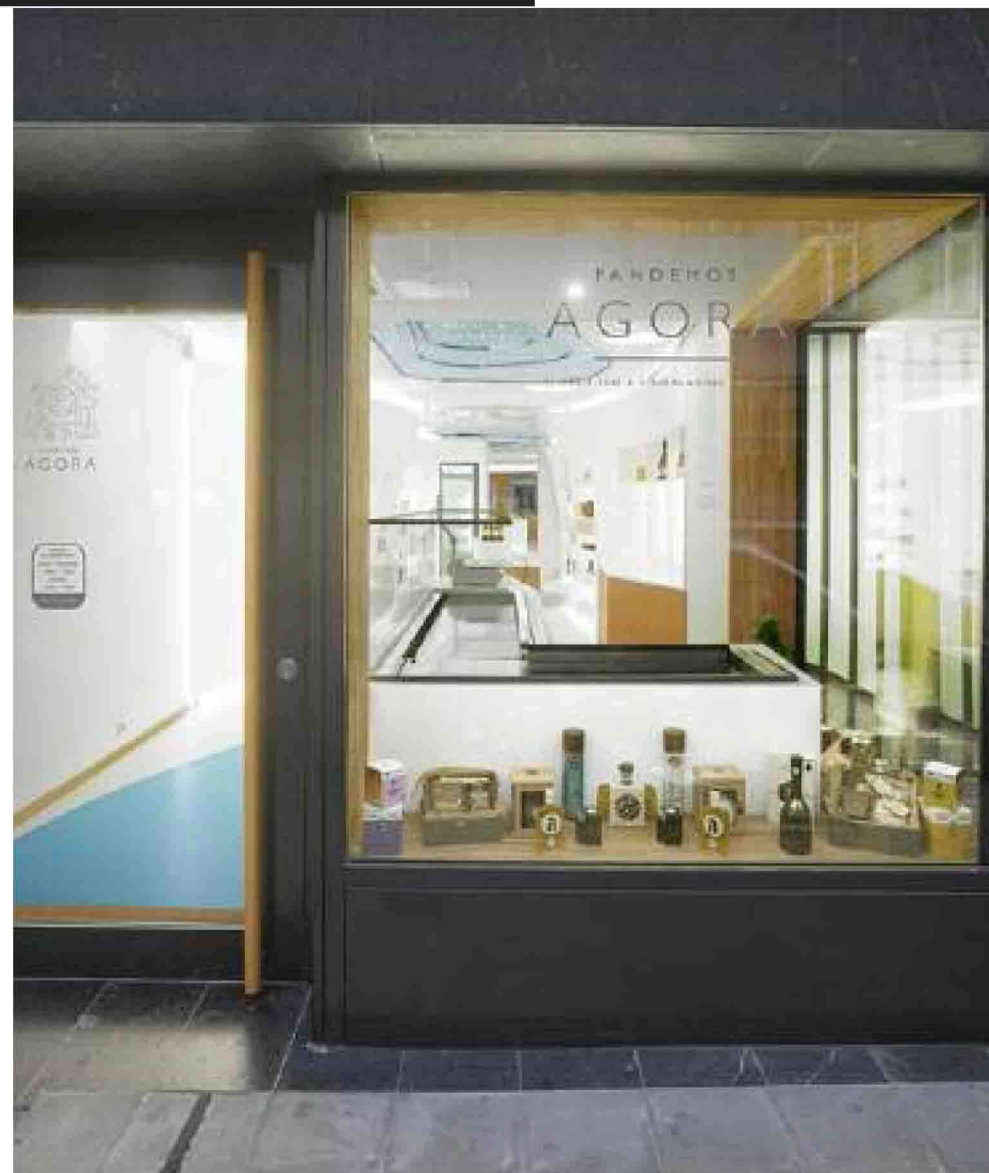
Pandemos Agorà is a small boutique shop in Luxembourg mostly for Greek cosmetic and deli products.

WWW.KLABARCHITECTS.COM

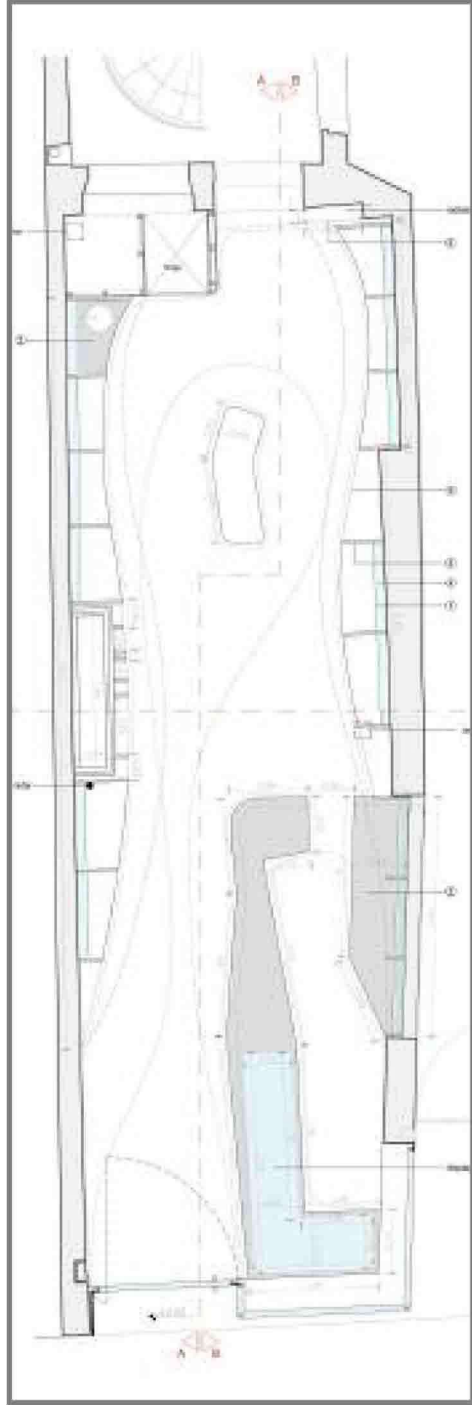
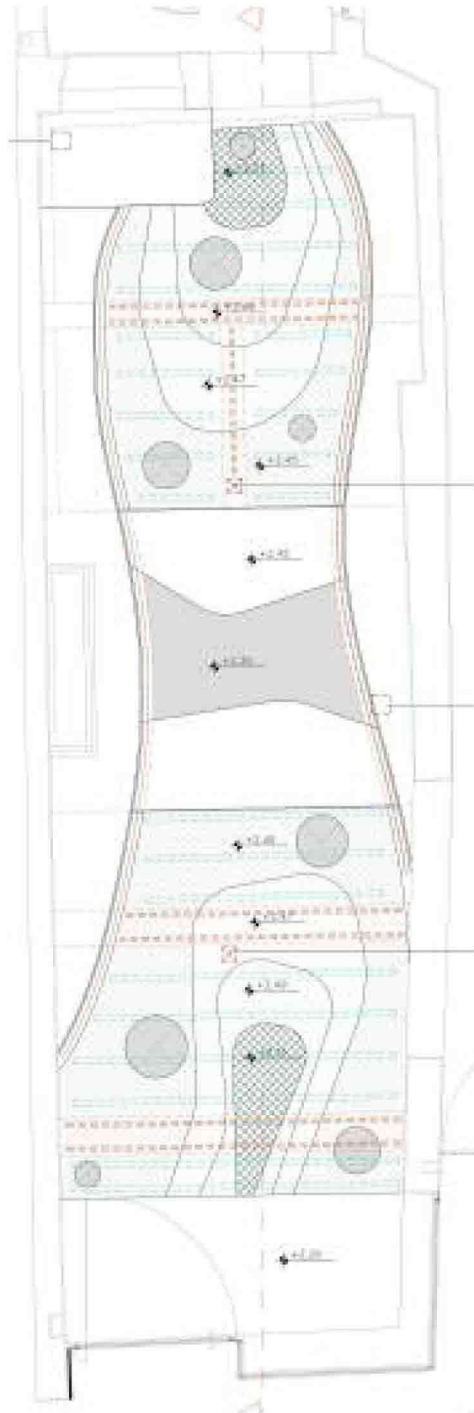
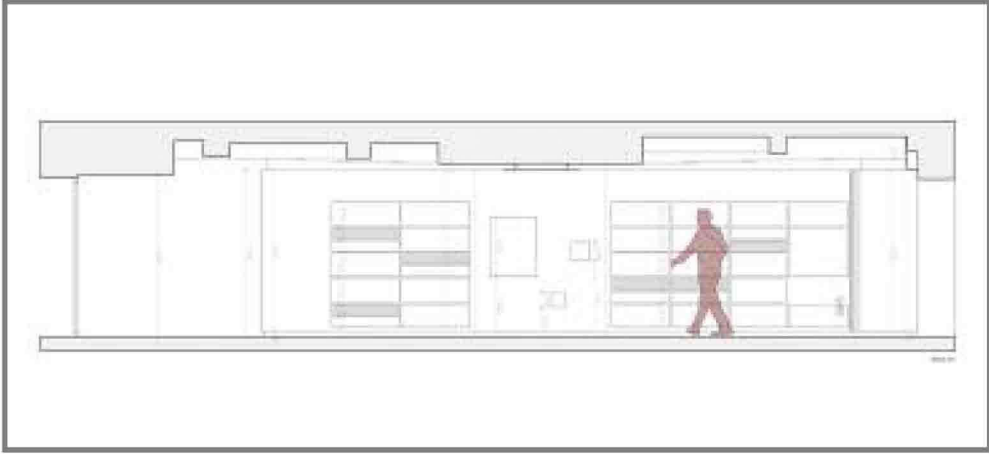
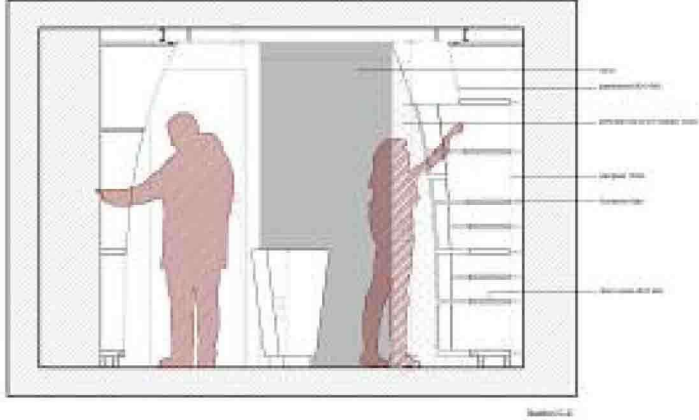
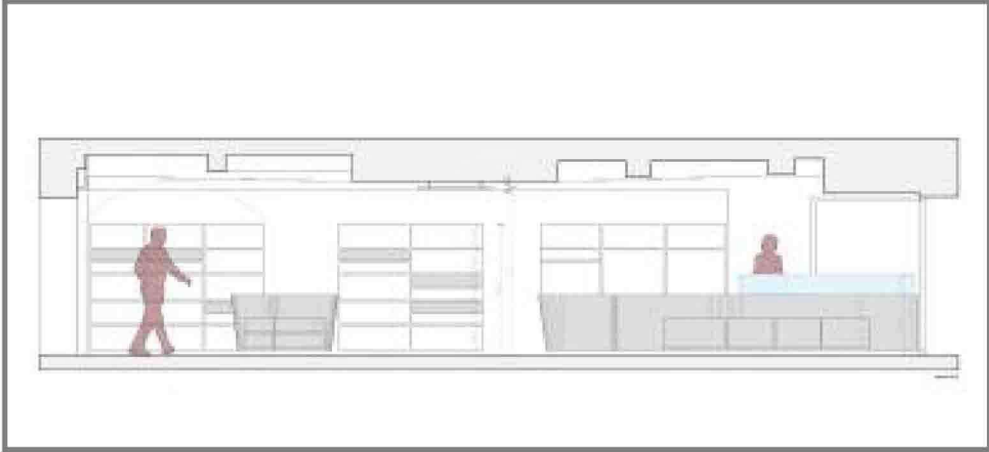
AGORA



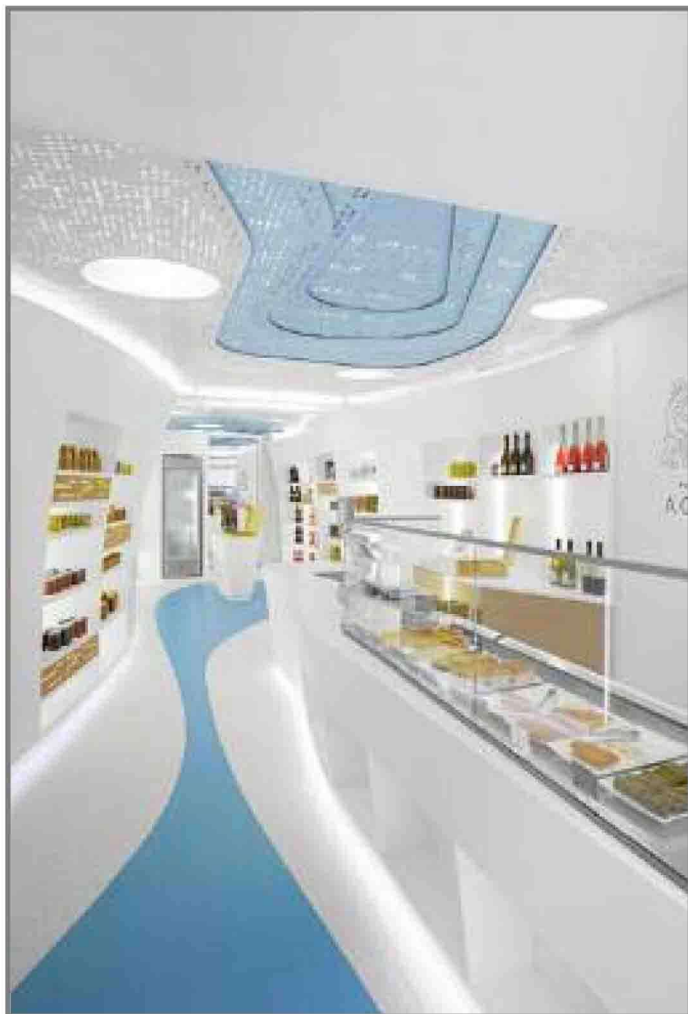
The store was designed by the architecture Klab, who had to operate in an area of just 40 square meters, trying to combine the different dimensions of the product, giving a feeling of a museum. Most of the products have an exceptionally designed packaging, one of the main reasons why they were chosen by the owner. The owner's request of a 'Greek atmosphere' within the shop played an important role in the design process which does not employ cliché forms and images from the archaic



PROJECTS / RETAIL



PROJECTS / RETAIL



times which for decades have been synonyms of "Greece" and mostly used in Greek restaurants all around the world. Klab studio was inspired by the Cycladic islands' architecture. The shop is long and narrow with a small façade facing the street. The new furniture and the curvy walls produce an effect of different dimensions and depth. The whiteness, the smooth curves in combination with a degraded blue ceiling provide a sense of purity and simplicity in rather complex shapes. The 'Greek atmosphere' is re-defined in an abstract interpretation of the intense Cycladic light and of the vernacular local architecture. Klab use of light determines the space. Products are illuminated from the back through sand-frosted Perspex. Lighting comes from the perforation of the ceiling and led lighting is implemented at the edges of the furniture giving the illusion of a detached flying wall *M. B.*

**PROJECT SHEET / SCHEDA TECNICA**

Name creation / Nome realizzazione:

PANDEMOS AGORA

Architect / Architetto:

KLAB ARCHITECTURE

Gross floor area / Superficie lorda:

40 MQ

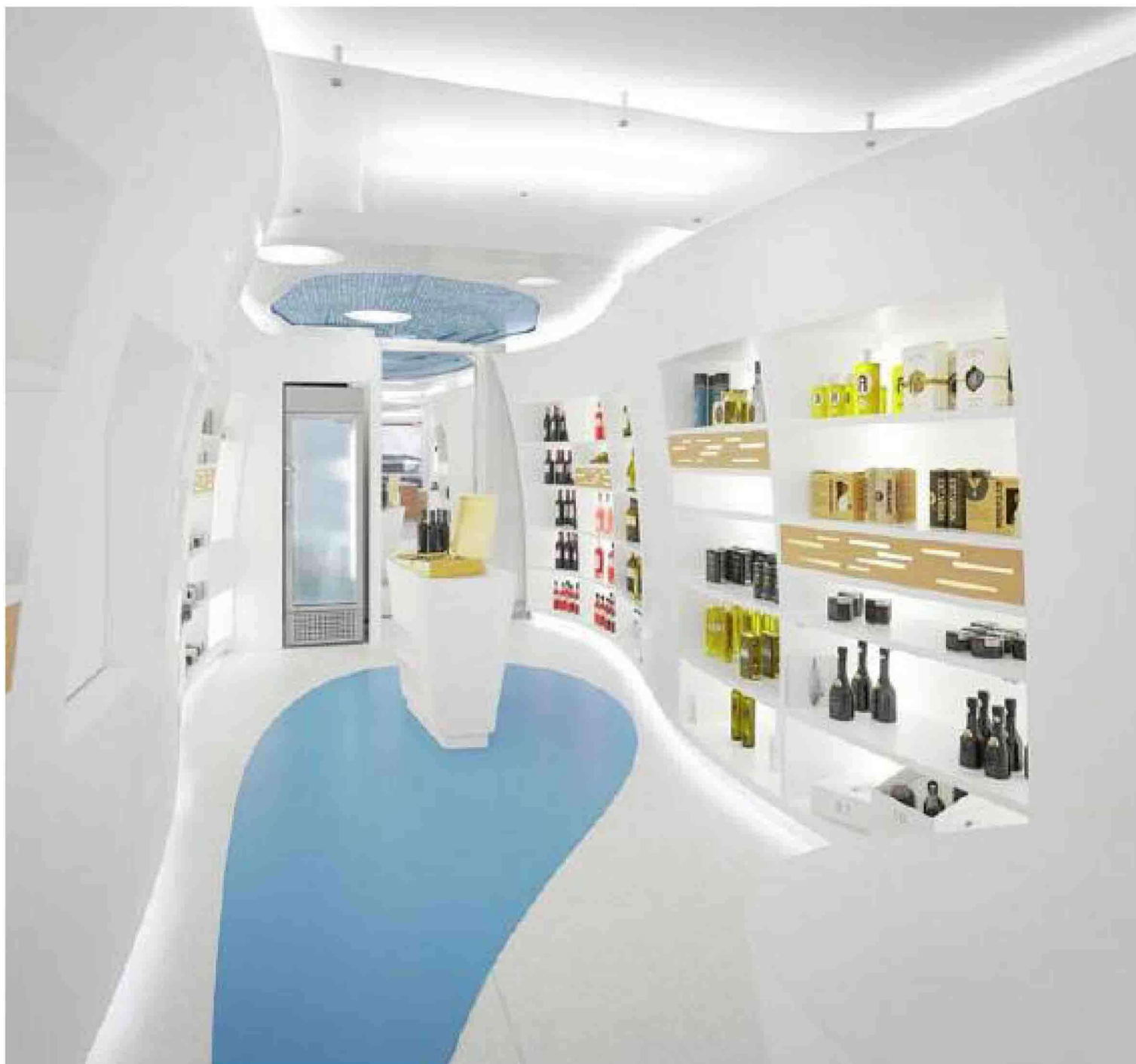
Year of construction / Anno di realizzazione:

2015

Place / Luogo:

LUSSEMBURGO

PROJECTS / RETAIL

**KLAB ARCHITECTURE**

It is an international group of highly qualified and motivated architects; being a multicultural team, KLAB architecture is able to deal with a diverse field of projects, from large planning schemes to the completion of detailed technical drawings for specialised solutions. KLAB architecture finds inspiration in the interconnection and juxtaposition of everyday things in life. It combines the ephemeral with the diachronic, the classic with the modern, natural with artificial, large and small scales, conventional and experimental materials. Everyday research is integral to high-quality innovative and functional design. Every client is unique and poses a new and interesting challenge for the office members, who engage in an active dialogue with the client at every stage of the building process. Every project is tailor-made to the requirements and aspirations of the client.